



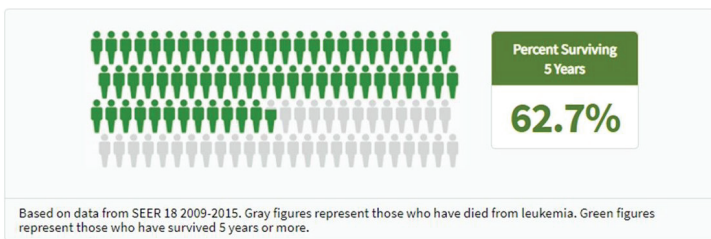
**EARLY  
DIAGNOSIS  
CAN SAVE  
LIFE**

# LEUKEMIA

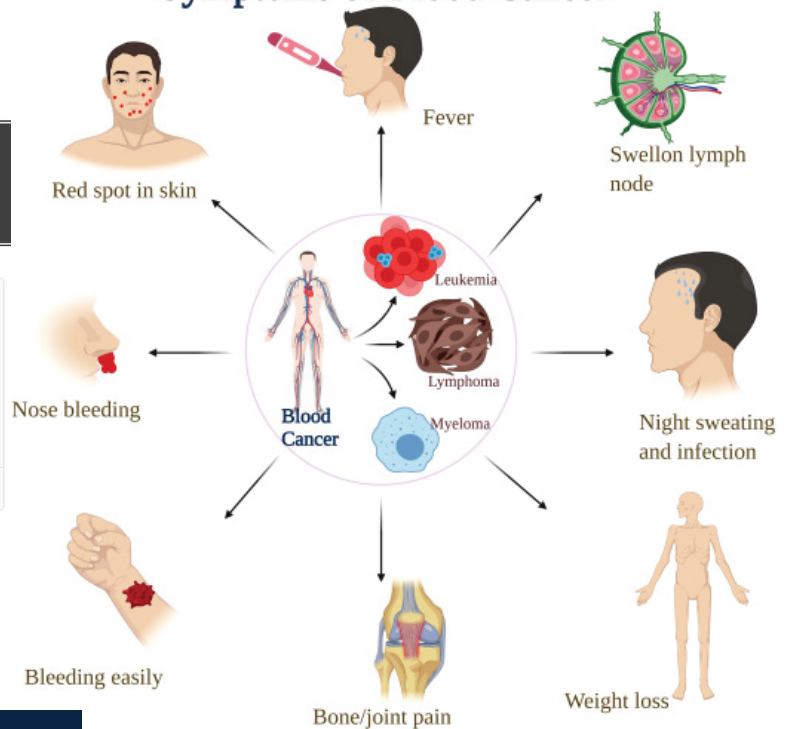
## Cancers of the Blood Cells

*Acute Lymphoblastic Leukemia | Acute Myelogenous Leukemia |  
Chronic lymphoblastic Leukemia | Chronic myelogenous Leukemia*

### Leukemia 5 Year Survival After Diagnosis



### Symptoms of Blood Cancer



**PROTEOMICS AND MOLECULAR  
PANELS FOR LEUKEMIA DIAGNOSIS**

**FISH | RT-PCR | MICROARRAY | MLPA | NGS**

